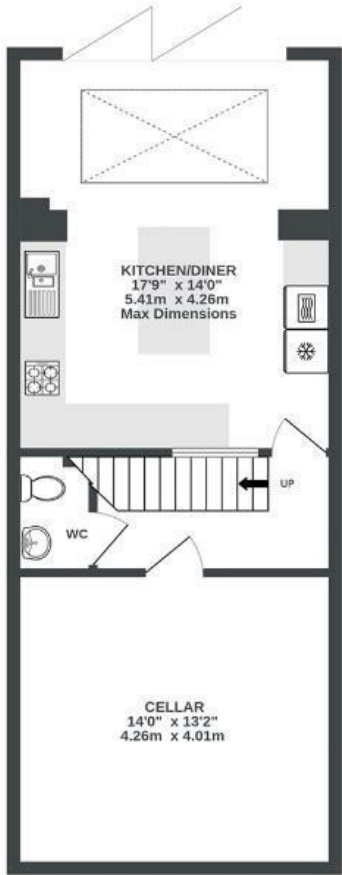


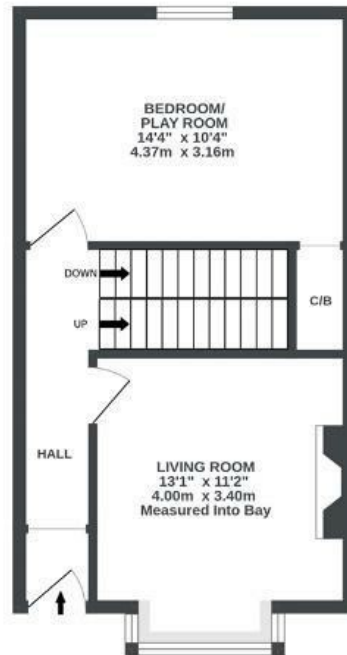
# Stanbury Road

## VICTORIA PARK

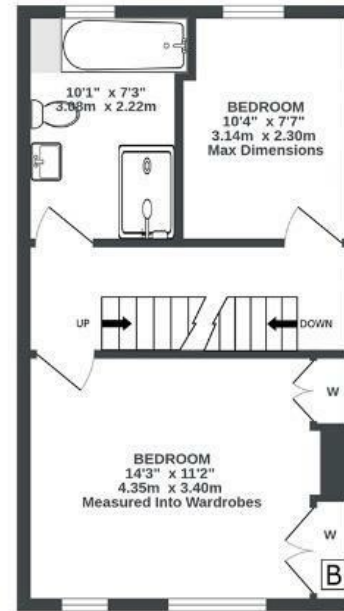
APPROXIMATE FLOOR AREA  
145.7 SQM / 1569 SQFT



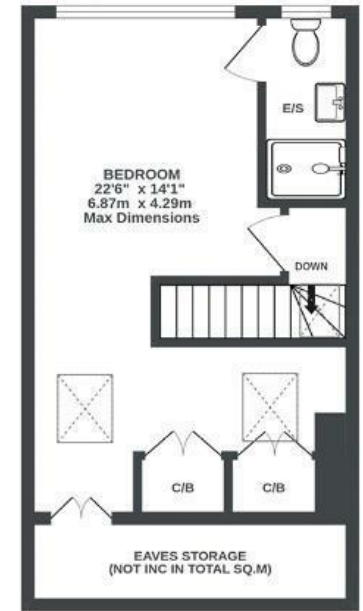
LOWER GROUND FLOOR  
499 sq.ft. (46.4 sq.m.) approx.



GROUND FLOOR  
385 sq.ft. (35.8 sq.m.) approx.



1ST FLOOR  
373 sq.ft. (34.6 sq.m.) approx.



2ND FLOOR  
311 sq.ft. (28.9 sq.m.) approx.



Illustrations are for reference purposes only, measurements are approximate, not to scale.

Boardwalk

# Stanbury Road , BRISTOL

£

£600,000



BS3 4QG

zzz

4 Bedrooms



2 Bathrooms

*"We as a family, love living by the beautiful park, we often take the kids and have a nice coffee, we love opening up the bi fold doors in the kitchen when its nice out, putting on the festoon lights and chilling round the fire pit with a glass of wine. Equally in the winter its lovely to light the fire stove in the living room."*

